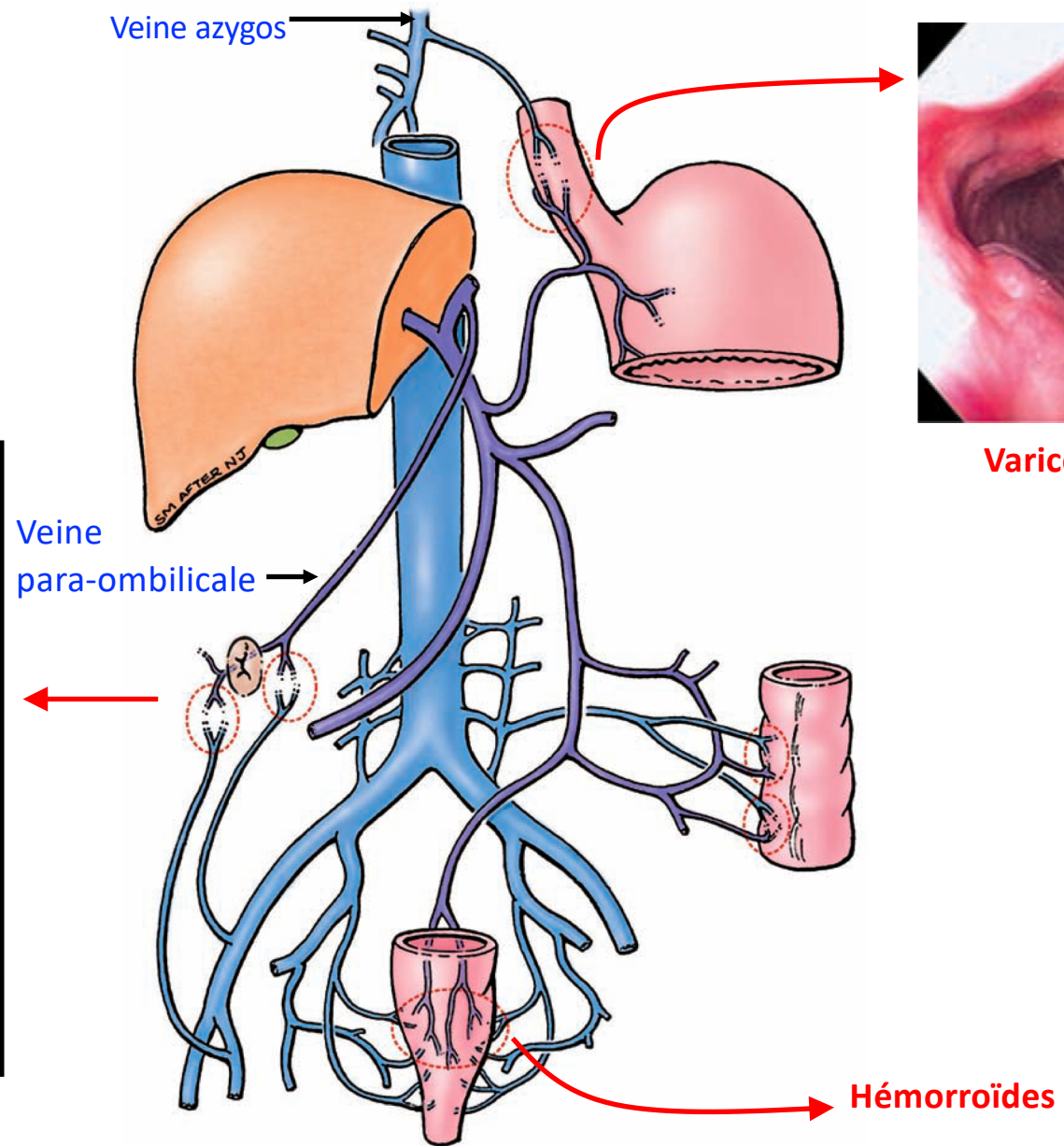
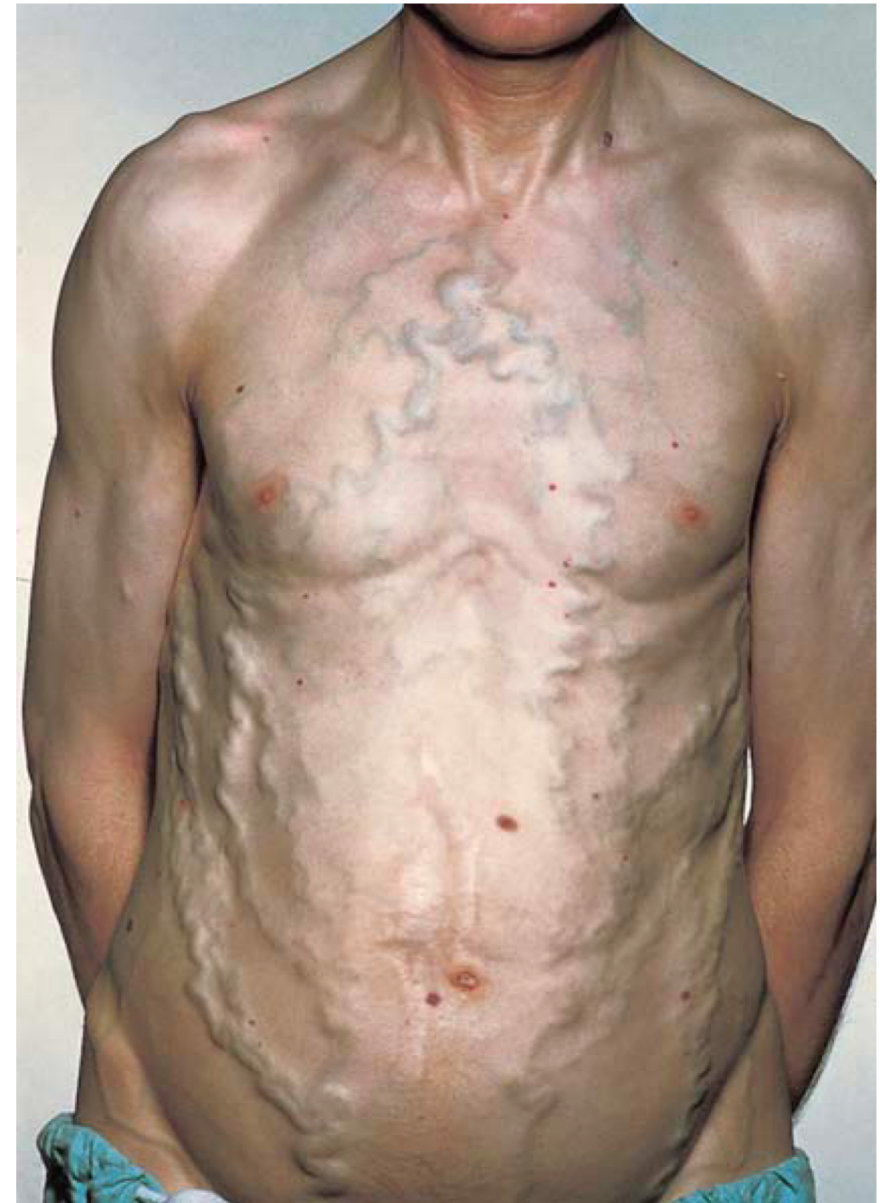
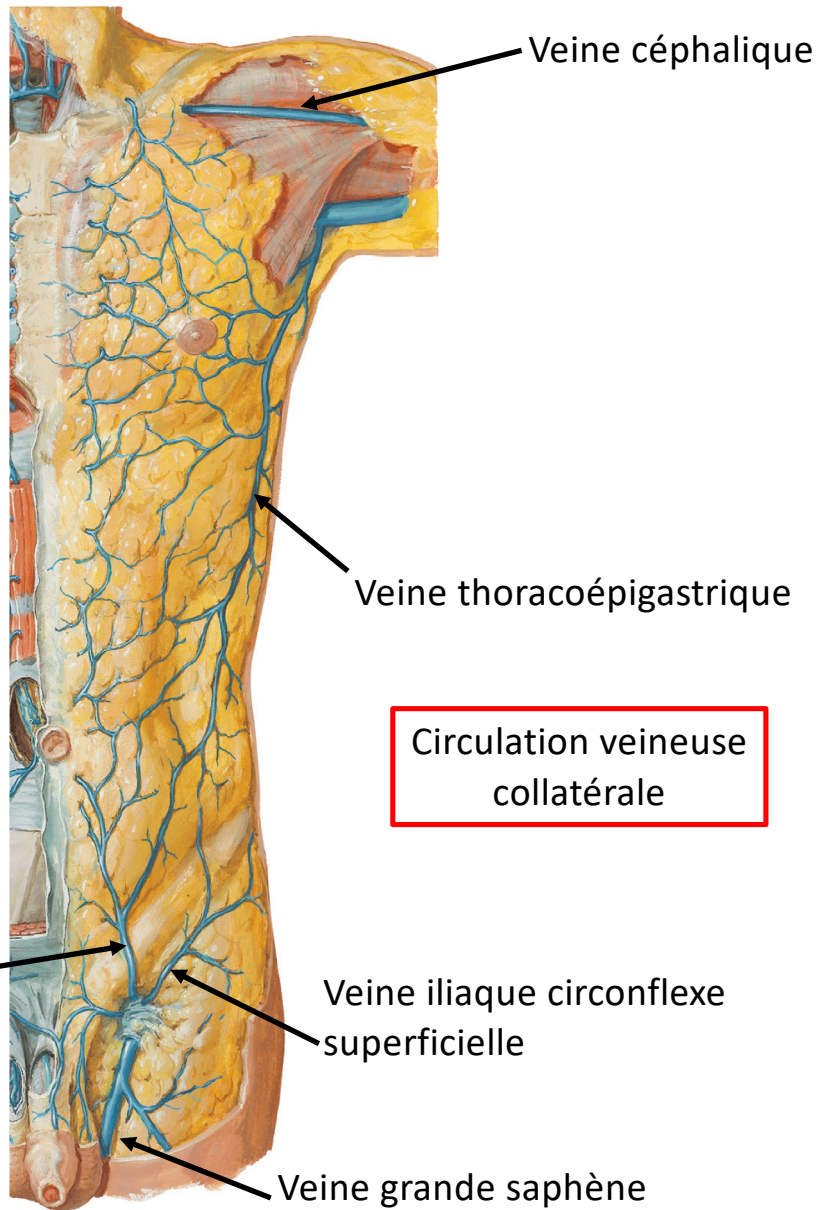


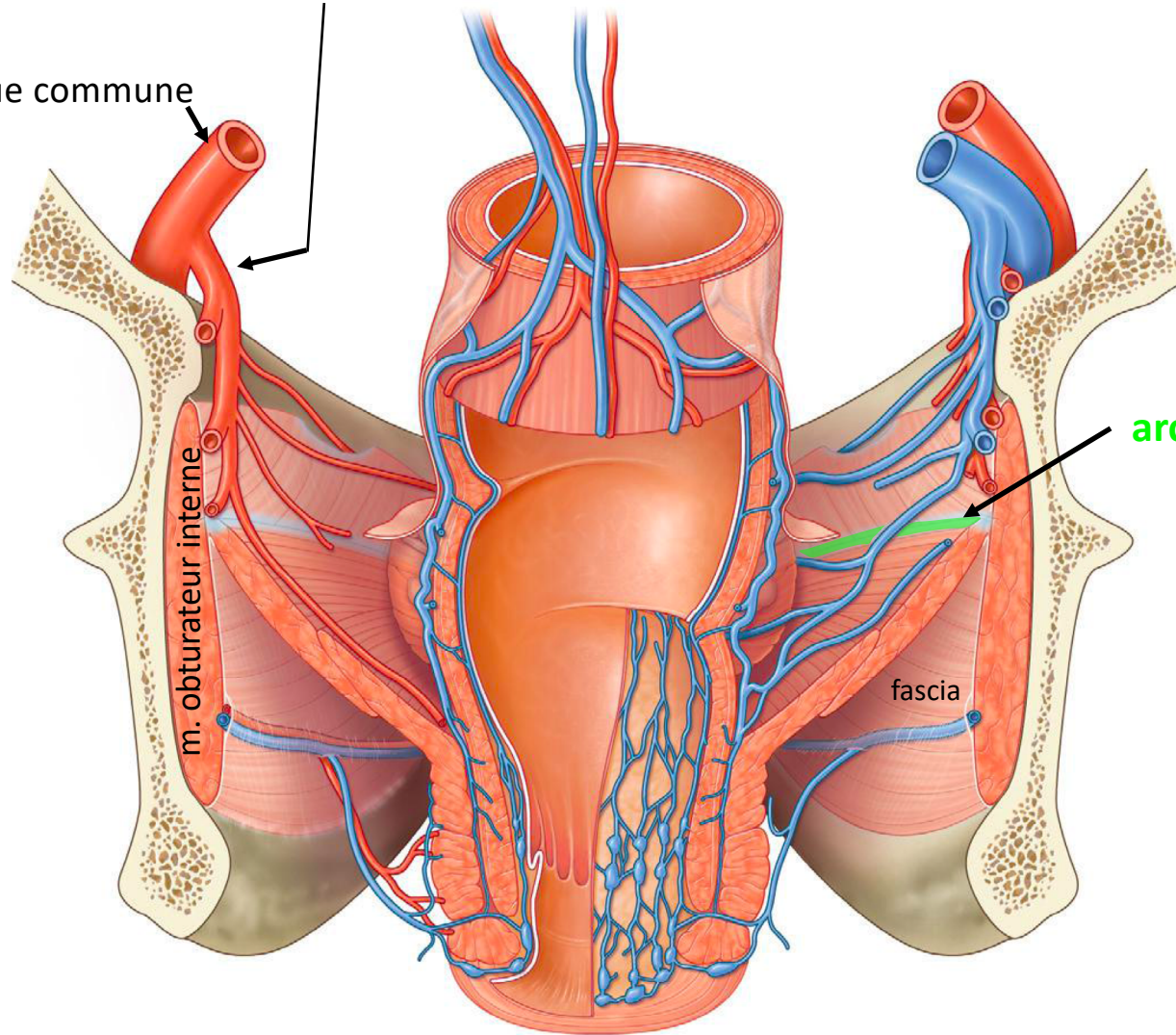


Caput medusæ





Artère iliaque interne
Artère iliaque commune



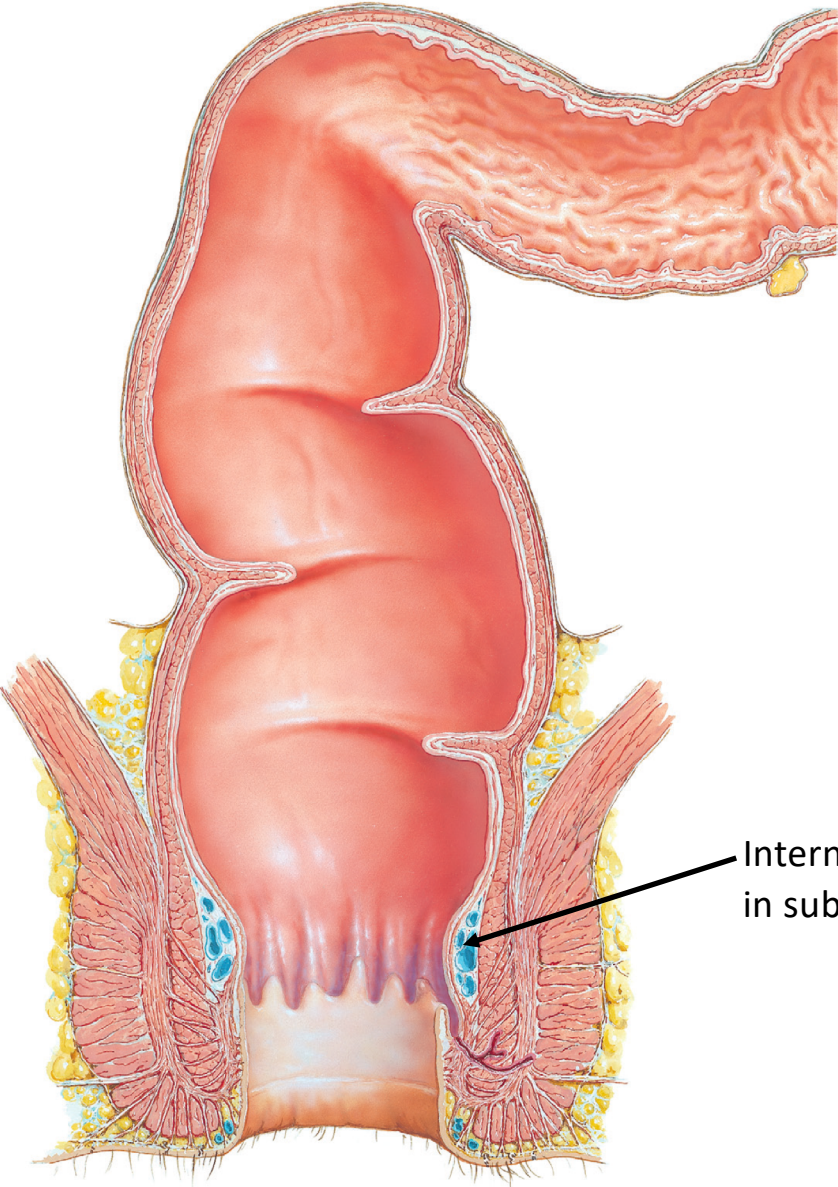
arc tendineux

fascia

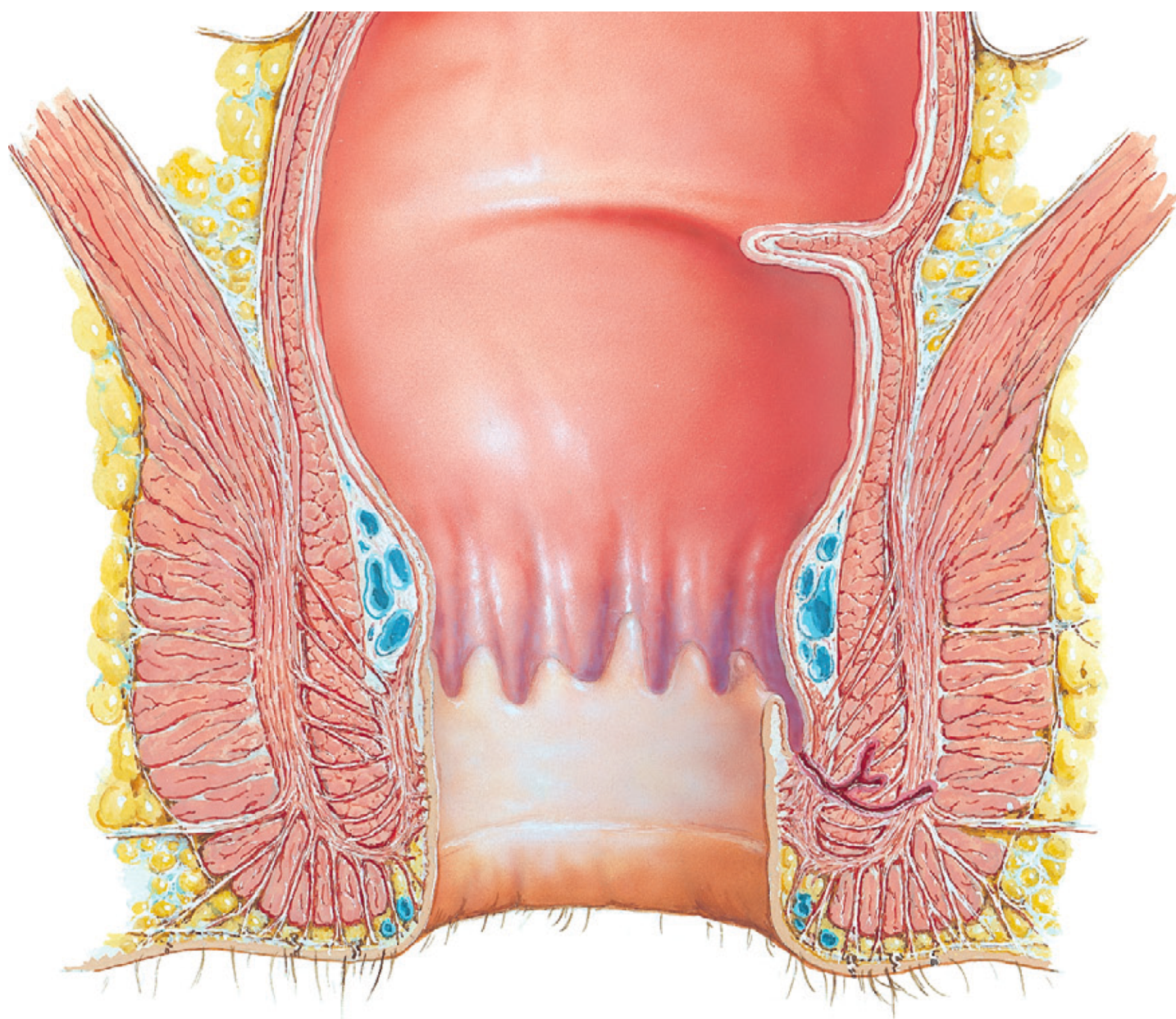
Vue postérieure

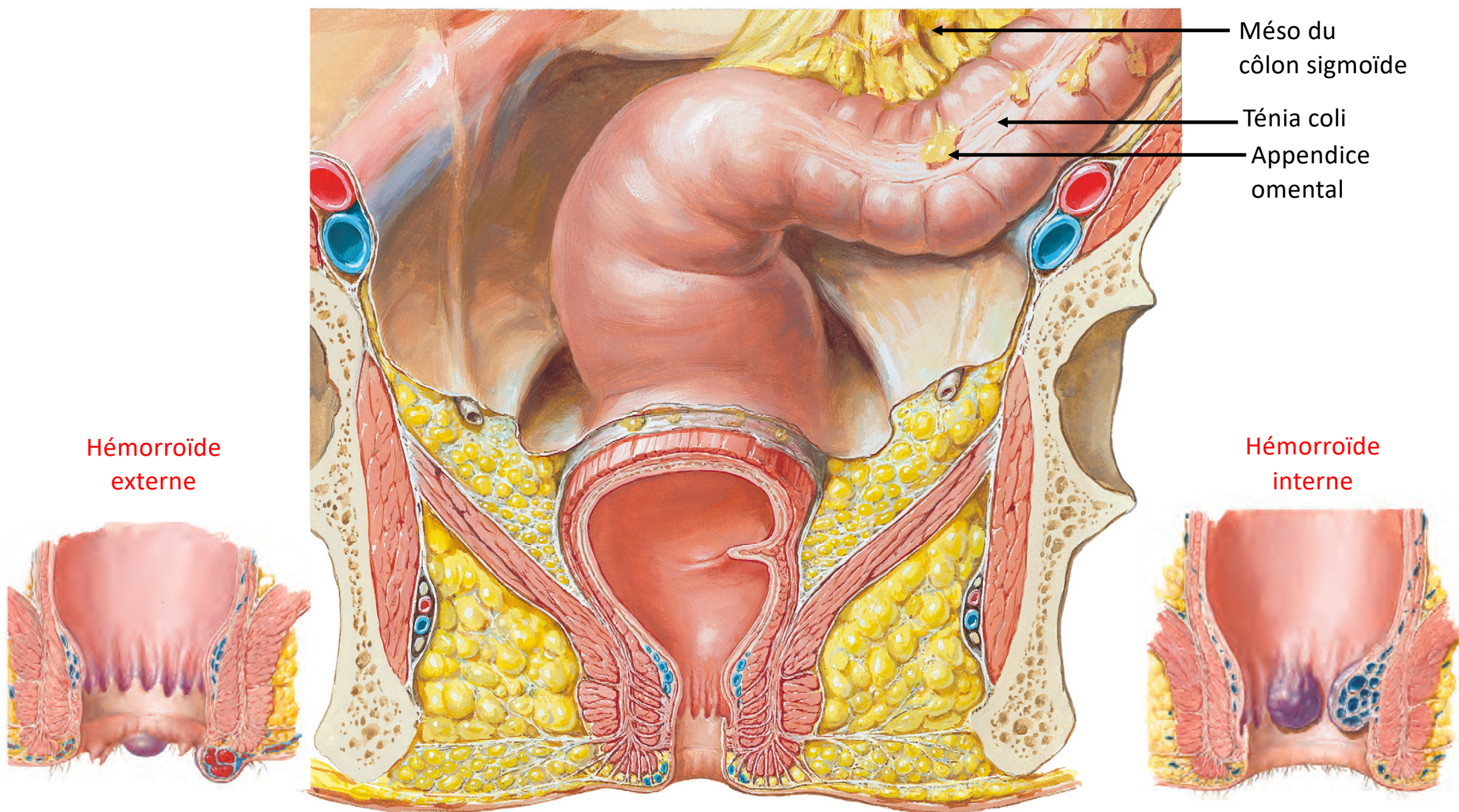
Rectum

Canal anal



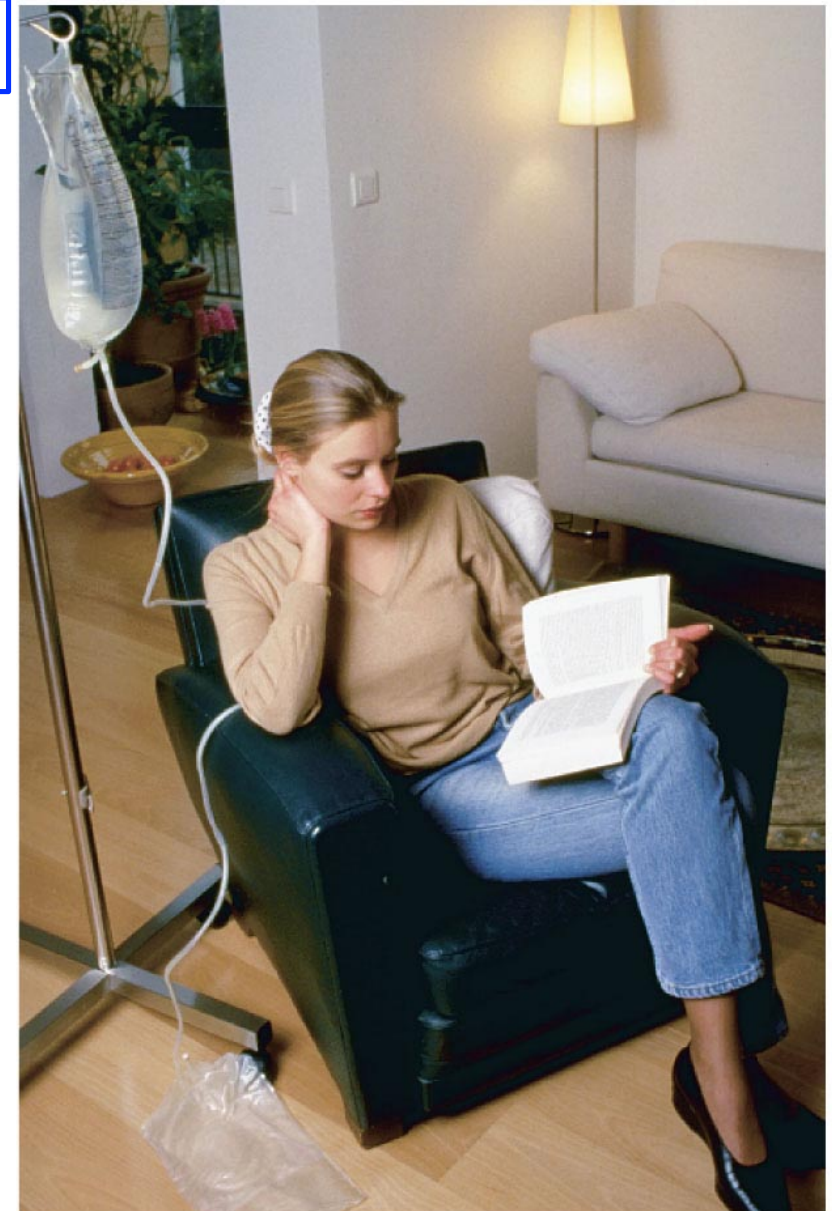
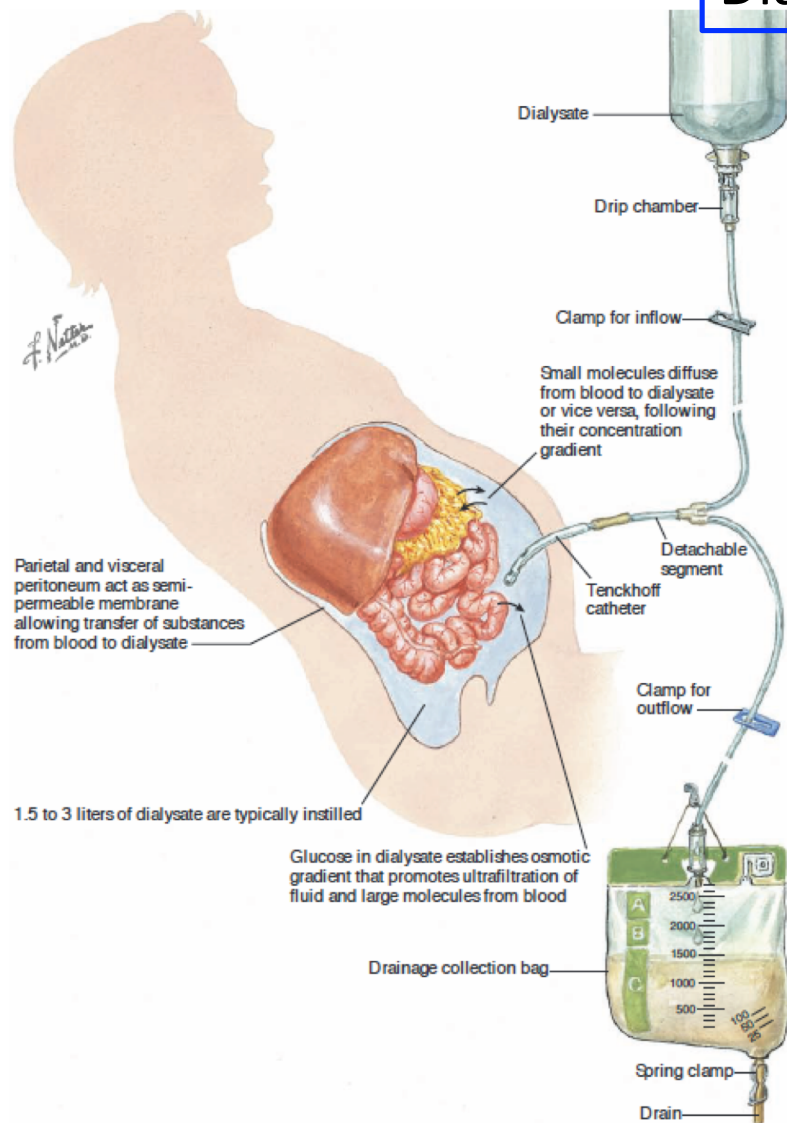
Internal rectal venous plexus
in submucous space





Dialyse péritonéale

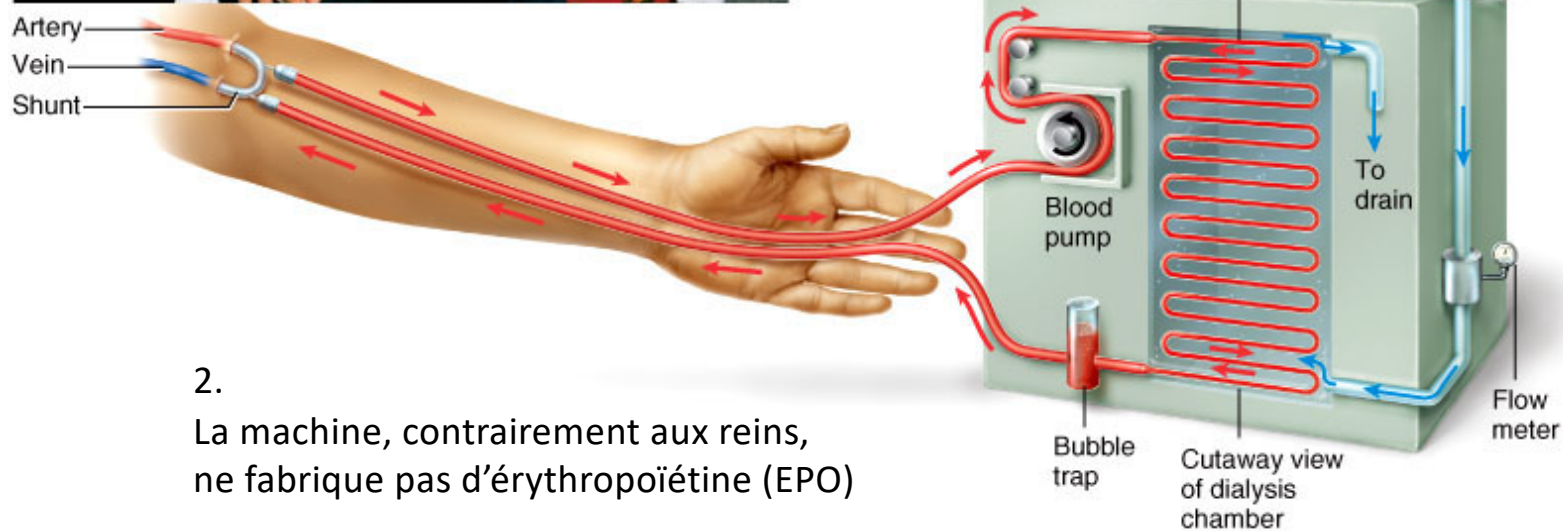
PERITONEAL DIALYSIS





Remplacement de la fonction rénale

1.
Le « rein artificiel »
(hémodialyse) élimine les
déchets métaboliques
à la place du rein.



2.
La machine, contrairement aux reins,
ne fabrique pas d'érythropoïétine (EPO)